

FIGGE

ART MUSEUM

2018-19 ANNUAL REPORT

FIGGE





Michelle Hargrave

Views from the Figge ANNUAL REPORT Edition

November 2019 • Issue 38
Published four times a year at no charge for members, friends and people interested in the museum.

Figge Art Museum
225 West Second Street
Davenport, Iowa 52801-1804
563.326.7804 • www.figgeartmuseum.org

Home of the  art collection.



Grand Lobby
at the Figge
Art Museum

Exclusive sponsor of Grand Lobby

THE CURRENT *Iowa*

is the exclusive hospitality sponsor for the Figge Art Museum

HOURS

10 a.m.-5 p.m. Tuesday, Wednesday, Friday and Saturday; 10 a.m.-9 p.m. Thursday; Noon-5 p.m. Sunday

Café hours Tuesday-Friday, 11 a.m.-2 p.m. and Thursday (small plate) 4-7 p.m.

Café reservations and facility rentals
563.345.6647

ADMISSION

\$10 adults; \$6 seniors and students with ID; \$4 children ages 4-12

FREE ADMISSION

Children under age 4; museum members; all seniors first Thursday of the month; active U.S. Armed Forces and their families; and Thursday evenings from 5-9 p.m.

REDUCED ADMISSION

AAA members save \$2 on a full-priced admission

Wheelchairs available

FALL GREETINGS FROM THE FIGGE

It has been a true pleasure to serve as the interim director of the Figge since July. The intelligent team is dedicated to fulfilling the stated mission: *Bringing art and people together*. They bring that to life through the numerous exhibitions, programs, classes and events you'll learn about in this newsletter.

During these months, we have begun working on the plans for our next major exhibition, *For America*, opening February 2021. This stunning collection of 90 works by American artists includes their very personal self-portraits as well as a selection of their works you'll no doubt find compelling.

The Figge Board of Trustees continues to play an active role in guiding the organization to successful outcomes and growth.

Our search committee is to be commended for its efforts in selecting Michelle Hargrave as our new executive director and chief executive officer. She is planning to move here and begin her service in early December 2019.


"Her extensive background growing cultural institutions will serve her well as she continues the growth and success of the Figge," said Ken Koupal, president of the Figge Board of Trustees. "Her experience and leadership abilities combine nicely with our opportunity to take the Figge to the next level as a regional resource and cultural center for the Quad Cities."

As Deputy Director of the New Britain Museum of American Art, Hargrave oversaw significant growth in the museum's programs; contributed and earned revenue; membership; and attendance. In her prior role as curator at the American Federation of Arts, New York City, Hargrave organized dozens of exhibitions and spearheaded international and national partnerships as well as institutional development. She holds a Master of Arts from the Bard Graduate Center, New York City, where she spent several years as an associate curator.

We look forward to seeing you at the Figge soon.

Very truly yours,

Carmen Darland, Interim Director

Find the Figge! Look for the building  hidden in this report. Stop by the Museum Store and tell us where you found it to enter into a drawing to win a fun Figge prize.

FIGGE BOARD OF TRUSTEES As the governing body of the Figge Art Museum, the board, in consultation with the Figge's director and senior staff, determines the museum's strategic direction and provides oversight on art acquisitions, educational programming, events, fundraising and financial decisions. Their leadership and support assists the Figge in being the thriving, energetic museum it is today.

EXECUTIVE COMMITTEE

Ken Koupal <i>President</i>	Samuel Skorepa <i>Secretary</i>
Cynthia Carlson <i>Past President</i>	Kay Hall <i>At Large</i>
Don Doucette, PhD <i>Vice President</i>	Debby Stafford <i>At Large</i>
Hunt Harris <i>Treasurer</i>	

BOARD MEMBERS

Kyle Carter	Denise Garrett	Carolyn Martin, MD	Greg Schermer
Nancy Danico	Mary Lou Kotecki, PhD	Marion Meginnis	Aleeza Singh
Joseph D'Souza, DDS	Richard Lynn	Sue Quail	Tom Terronez



Red, White and Boom! Watch Party
Rufino Tamayo Exhibition
Laurel Farrin: No Particular Order Exhibition

**JULY
2018**



Student's Rebuild: Facing Difference Exhibition
 Carolyn C. Moon Gallery Dedication
John Bloom: Close to Home Exhibition
 Art Off the Wall

**AUG
2018**

36,112
 French Moderns
 total attendance

Living Proof Exhibit: A Visualization of Hope Exhibition
 First Traveling Exhibition Organized by the Figge Art Museum:
William L. Hawkins: An Imaginative Geography

**SEPT
2018**

French Moderns: Monet to Matisse, 1850-1950 Exhibition
 Figge Member Brunch with Ballet Quad Cities
 Crepe Breakfast with Brooklyn Museum Curator Lisa Small
 Brunch Program with Dr. Marni Kessler
 Talk with Dr. Jonathan Petropoulos

**OCT
2018**



Museum Store Sunday
 An Evening with Ross King
 Art Historian Talk with Dr. Pamela White
 Wine & Cheese Tasting

**NOV
2018**



Member Dinner
 Free Admission to Museum December 21, 2018-January 6, 2019

**DEC
2018**

109,031
 Total museum
 attendance

Young Artists Exhibition: Pleasant Valley Schools, Davenport Schools
Art Nouveau Amphora Exhibition
Animals in the Museum Exhibition

**JAN
2019**

Young Artists Exhibition - Bettendorf Schools, Rock Island-Milan Schools
Submerged in the Sublime: The Landscape Photography
 of *Kim Kever* Exhibition
Louis Comfort Tiffany: Treasures from the Driehaus Collection Exhibition

**FEB
2019**



Cajun Cook-Off
Young Artists Exhibition: North Scott Schools, Moline Schools,
 Geneseo Schools

**MAR
2019**



Young Artists Exhibition: Muscatine Schools, Private Schools
 Partner Program with Niabi Zoo
 Brand Boeshaar Scholarship Reception
 Dancers in Company Performance
 Classes: Self Portrait and Watercolor

**APR
2019**

53,000
 Total individuals
 served by all
 education
 programs

Vanessa German: Miracles and Glory Abound Exhibition
 Author and Collector Byron Vreeland Talk: *Art Nouveau Amphora*
 Beaded Jewelry Class
 Performance by Vanessa German
 State of the Art Film Showing

**MAY
2019**

Art at Heart Gala
 New Contract Signed with the City of Davenport
Vik Muniz: Hand Remade Exhibition
Art by the Foot Exhibition

**JUNE
2019**

EXHIBITIONS 2018-2019

This past fiscal year the Figge Art Museum presented 17 special exhibitions. Through exhibitions and a variety of accompanying programs, the Figge engaged the community with artwork ranging from intricate stained glass to contemporary sculpture. These exhibitions would not be possible without the museum's generous sponsors.

SPONSORSHIP LEVELS

Where the Wild Things Are:

Maurice Sendak:

The Memorial Exhibition

May 12–August 12, 2018

John Deere Foundation

Blackhawk Bank & Trust

Andy and Debi Butler, Eye Surgeons Associates, KK Runge Associates Bettendorf Public Library, Davenport Public Library, Moline Public Library, Rock Island Public Library

Georgia O'Keeffe:

Flower Abstraction, 1924

June 1–August 31, 2018

Alois Kronschlaeger:

Polychromatic Contemplations

June 9–September 16, 2018

RDG Planning & Design

Steve Banks:

Pop Culture Palimpsest

June 9–September 2, 2018

Rufino Tamayo:

From the Dennis L. and Patricia A. Miller Collection

July 7–December 30, 2018

Dr. Charles and Deborah Cassel, Ralph and Marcia Congdon, Robert and Karlen Fellows, Dr. William and Deborah Irey, Matt and Tracy Lindaman, Drs. Joseph and Carolyn Martin, Bernadette Murphy, Peter and Merriam Rink, Dr. Richard and Annette Ripperger, William and Kay Whitmore

Laurel Farrin:

No Particular Order

July 14–September 9, 2018

John Bloom:

Close to Home

August 25, 2018–January 13, 2019

Robert W. Baird & Co., Sue Quail, TBK Bank, The Reeg Group at Robert W. Baird

William L. Hawkins:

An Imaginative Geography

September 22–December 30, 2018

Henry Luce Foundation

Iowa American Water Company, Wells Fargo Bank

GLH Galleries, Marc and Gma Howze, Thomas K. and Jennifer Figge, Tom and Mary Waterman Gildehaus Endowment

French Moderns:

Monet to Matisse, 1850–1950

October 9–December 30, 2018

The Hunt and Diane Harris Family Foundation, Genesis Health System, Arconic Foundation, John Deere Foundation, Twin Shores, US Bank Foundation

BITCO Insurance Companies Mark and Rita Bawden, Cynthia Carlson, Kay and John Hall, Scott and Raelene Pullen, Debby and Hugh Stafford

Art Nouveau Amphora

January 19–June 16, 2019

Animals in the Museum

January 26–April 28, 2019
Barbara Leidenfrost in loving memory of her husband Oscar Leidenfrost

Heidi Hernandez:

Why Strangers

January 19–July 7, 2019

Kim Kever:

Submerged in the Sublime

February 9–August 18, 2019

Louis Comfort Tiffany:

Treasures from the Driehaus Collection

February 16–May 19, 2019

Arconic Foundation

US Bank

John Gardner and Cathy Weideman, Jumer's Casino and Hotel, MidAmerican Energy, Schafer Interiors, Xenotronics

Grant Wood and the American Scene

April 23, 2019–current

Vanessa German:

Miracles and Glory Abound

May 11–September 1, 2019

GLH Galleries, Marc and Gma Howze, Barbara Leidenfrost in loving memory of her husband Oscar Leidenfrost, Dr. Randy and Linda Lewis, Quad City International Airport

Vik Muniz:

Hand Remade

June 8–September 29, 2019

Chris and Mary Rayburn

THANK YOU TO OUR EXHIBITION SPONSORS!

To support exhibitions like these, please contact Sara Morby at 563.345.6642.

FRENCH MODERNS



What single attraction in the Quad Cities drew more than 36,000 visitors, including tourists from 47 states—as far away as Hawaii and Alaska—and 12 countries? What welcomed more than 1,700 visitors in a 2-acre space in one day? If you guessed the John Deere Classic, you were close; it has a few more acres and attracts about 100,000 spectators annually.

The correct answer is the Figge Art Museum's first major exhibition *French Moderns: Monet to Matisse, 1850-1950*, that opened October 2018. It highlighted one of the most dynamic eras of art. With 60 works from the Brooklyn Museum collection divided into four themes: landscape, still life, portraits, figures and the nude, the exhibition showed how artmaking changed over the course of a century.

The Figge was honored to be a destination for this amazing exhibition, thanks to the support of many partners. This was a pivotal opportunity for which the Figge was well prepared under the leadership of recently retired Executive Director Tim Schiffer. His dedication, strong community relationships and development of the museum during his tenure, along with a passionate team, docents and volunteers, ensured that the museum was poised to make this exhibition the most talked about event of the year.

Hosting a premier exhibition of this magnitude required a great deal of financial and local support. The Figge development team and its committees, led by former Development Director Raelene Pullen, got right to work spreading the word. Our community overwhelmingly answered with contributions totaling \$1.3 million which provided support for the expense of hosting *French Moderns* and established the Figge's first Major Exhibition

Endowment Fund which will continue to provide for future major exhibitions.

Our education, curatorial and marketing teams worked diligently with volunteers and more than 40 community partners to develop and market collaborative events with a *French Moderns* theme. This included joint ventures such as French cooking, meditation, ballet, scholar talks, behind-the-scenes curatorial insights, and more. Buses abounded as docents led 125 group tours, including 14 college groups. The Figge hosted 35 events on-site and more than 40 partner events off-site, in addition to 74 presentations by our educational outreach team.

We are thankful to the board, committees, donors, docents, volunteers, community partners and visitors who supported bringing such a marvelous opportunity to the Quad Cities. *French Moderns* raised the bar and the community reaffirmed its desire to have major exhibitions at the Figge. We already have begun planning our next big event.

The Figge will host *For America: Paintings from the National Academy of Design* beginning in February 2021. This exhibition of 90 works will be presented on two floors and feature some of the most recognizable names in American art, including Winslow Homer and Eastman Johnson.

If you want a sneak peek, you can pick up the *For America* catalogue in the Museum Store. Don't forget to renew your membership for access to exclusive opportunities coming soon.

Founded in 1825, the National Academy of Design (known simply as the National Academy) has long been a leading artistic voice in America as an honorary artists' society, school and museum. *For America* tells the story of the National Academy, from the early 19th century into the 21st. Organized by the American Federation of Arts and the National Academy of Design, *For America* includes works by some of the most recognizable names in American art.

“LOVE THE ‘TRY YOUR HAND’ SECTION—
WHAT A GREAT WAY
TO GET ENGAGED...”

—Anonymous



1

2



7



3

4



6



5

“BREATH TAKING, IT SEEMED
LIKE EACH PIECE OF ART
WAS A DIFFERENT WORLD.”

—Lucia

EXHIBITION HIGHLIGHTS

JOHN BLOOM: CLOSE TO HOME

August 25, 2018–January 13, 2019 | Katz Gallery
John Bloom: Close to Home featured the artwork of beloved local artist and associate of Grant Wood, John Bloom (1906–2002). Bloom’s industrial illustrations, sketches, painting, lithographs and childhood drawings were on display. A full-color booklet was published by the Figge and provided free to visitors, supported by William D. and Shirley J. Homrighausen Endowment Fund.

7 John Bloom, American, 1906–2002, *County Fair*, 1934, oil on Masonite, City of Davenport Art Collection, Gift of Mrs. Philip D. Adler, 1988.14

WILLIAM L. HAWKINS: AN IMAGINATIVE GEOGRAPHY

September 22–December 30, 2018 | First & Fourth Floors
Featuring more than 50 works created by the self-taught artist, accompanied by an extensive scholarly publication, and traveling to four venues, *William L. Hawkins: An Imaginative Geography* was a landmark project organized by the Figge Art Museum. The Figge received a prestigious Luce Foundation Grant for the exhibition, an award for projects which “exemplify the highest standards of scholarship and museum expertise in the field.”

5 William Hawkins, American, 1895–1990, *Prudential N.Y.C.*, 1985, enamel on Masonite, Gift of Thomas Kahl Figge in celebration of the museum’s 10th Anniversary, 2015.9

ANIMALS IN THE MUSEUM

January 26–April 28, 2019 | Katz Gallery

Curated primarily from the Figge and City of Davenport Art Collections, this exhibition included artwork portraying animals and explored themes including Beasts of Burden and Beloved Pets. The exhibition featured artwork from a range of periods, styles and mediums. A partner program with Niabi Zoo introduced several exotic species to museum visitors.

3 Pieter Brueghel the Elder, Flemish, 1525–1569, *The Parable of the Good Shepherd*, post 1565, oil on panel, City of Davenport Art Collection, Gift of C. A. Ficke, 1925.32

KIM KEEVER: SUBMERGED IN THE SUBLIME

February 9–August 18, 2019 | Fourth Floor

Kim Keever’s impressive large-scale photographs of atmospheric landscapes were featured on the fourth floor gallery. The artist creates the otherworldly images by photographing dioramas set within in a 200-gallon tank. Visitors were able to hear more about the process during the artist’s talk.

6 Kim Keever, American, *Waterfall 114j*, 2010, C-Print, image courtesy of the artist and Carrie Secrist Gallery

LOUIS COMFORT TIFFANY:

TREASURES FROM THE DRIEHAUS COLLECTION

February 16–May 19, 2019 | Third Floor

Drawn from the collection of the Richard H. Driehaus Museum in Chicago, the exhibition featured 62 exemplary works created by Tiffany’s studios, including extraordinary blown glass vases, stained-glass windows and an impressive selection of lamps. Arlie Sulka, Tiffany expert and owner of Lillian Nassau LLC, provided a lecture to a full house in the John Deere Auditorium.

4 Tiffany Studios, 1885–1933, *Landscape Window*, 1893–1920, leaded glass and quartz stones, Photograph by John Faier, © Driehaus Museum, 2013

VANESSA GERMAN: MIRACLES AND GLORY ABOUND

May 11–September 1, 2019 | Katz Gallery

Vanessa German: Miracles and Glory Abound featured an assemblage of German’s “Power Figures.” The exhibition drew on the iconic and largely historically inaccurate painting, *Washington Crossing the Delaware* by Emanuel Leutze. German is a citizen artist, activist, performer and poet and creates her work in response to the systemic challenges and injustices facing her community. At the opening, German gave a powerful spoken word performance and later emceed a poetry slam in partnership with young women poets.

1 *Vanessa German: Miracles and Glory Abound* exhibition installation at Figge Art Museum. Image courtesy of the Artist and Pavel Zoubok Gallery © Vanessa German

VIK MUNIZ: HAND REMADE

June 8–September 29, 2019

Internationally acclaimed artist Vik Muniz is known for making artwork out of unusual materials, like chocolate sauce, garbage and diamonds. *Hand Remade* featured one of his most recognized photographic series, *Pictures of Garbage* as well as recent works from the *Handmade* series, which integrates physical material as well as photography into the final artwork. A gallery interactive allowing visitors to try their hand at making a large mosaic image from paper plates was popular among museum guests.

2 Vik Muniz, Brazilian, b.1961, *The Gypsy (Magna)*, *Pictures of Garbage Series*, 2008–2011, Chromogenic print, Brent Sikkema Collection, Gift of Brent Sikkema, 2017.24.6, image © Vik Muniz / VAGA at Artists Rights Society (ARS), NY

**“MY TAXI DRIVER RECOMMENDED
THE FIGGE. THIS IS INDEED A
GREAT MUSEUM OF ART.”**

—Anonymous

1



3



2

**“GOOD ART SHOULD
MOVE YOU IN SOME
WAY! MISSION
ACCOMPLISHED.”**

—Anonymous



4

ACQUISITIONS

“I AM AN EXCHANGE STUDENT FROM AZERBAIJAN, AND THE FIGGE ART MUSEUM IS MY FAVORITE PLACE IN DAVENPORT!”

—Loman

This past year, through strategic purchases and many generous gifts, 68 wonderful works in a variety of media joined the Figge’s collection. A robust acquisition program continues to offer new and exciting works for the enjoyment of the Quad-City community. Whether acquiring artworks by important women artists to better represent their impact on visual culture or works that fill other longstanding critical gaps, the Figge actively seeks to acquire artworks that complement the existing Figge and City of Davenport Art Collections in significant ways. Of note this year is the acquisition of works by a diverse group of living and deceased artists who explore art making in similarly naïve and playful ways while offering unique commentary on the social and cultural aspects of contemporary society.

The humorous, comic book style of Red Grooms’ painting *Strike Up the Band*, 1998, acquired with funds from the Friends of Art Acquisition Fund, celebrates the youthful joy Grooms finds in the spectacle of a holiday parade while, in typical Groomsian fashion, he pokes fun at the overly serious nature of the art world.

Cleveland, Ohio, native Michelangelo Lovelace explores the grittier aspects of urban life in his large-scale painting *The Great Wall of Poverty*, 2002, purchased with funds from the Friends of Art Acquisition Fund. In a manner similar to Grooms, Lovelace paints in a highly approachable, sometimes comic and unconstrained manner with layers of impasto reminiscent of paintings by Philip Guston and

Wayne Thiebaud. Lovelace’s urban street scenes serve as a backdrop for the serious issues of homelessness, drug use, racial inequality and crime faced by the predominantly African-American community of Cleveland’s east side. At the same time, his scenes include small, friendly interactions between its characters, offering a more optimistic perspective on urban life.

Illinois native Doris Lee’s *Farm in Spring*, early 1940s, purchased with funds from the Friends of Art Acquisition Fund, is the second painting to be acquired by the Figge from Lee’s mature period. Lee’s painting celebrates the lighter side of rural life in Woodstock, New York. Rendered in her characteristic folksy manner, her characters involve themselves in a variety of pursuits both comic and serious.

Adolph Rosenblatt’s *Imperial Motors*, 1979, is a recent gift from the Adolph Rosenblatt Family and the Kohler Foundation. Rosenblatt’s love of life and sense of humor are readily apparent in this large clay sculpture depicting mechanics at work in a local auto repair shop. Although he started his career as a painter, Rosenblatt was drawn to the expressive possibilities of working in clay so that he could more readily capture the excitement he found in daily life.

Despite coming from completely different backgrounds, these artists are united in their use of playful visual styles. These are just four of the many wonderful new works the Figge looks forward to sharing with our community in the coming months!

“PLEASE KEEP BRINGING IN WOMEN ARTISTS. I AM SO HAPPY TO SEE SO MANY WOMEN ARTISTS EXHIBITED!”

—Anonymous

1 Adolph Rosenblatt, American, 1933-2017, *Imperial Motors*, 1979, painted unfired clay, Gift of the Adolph Rosenblatt Family and Kohler Foundation, Inc., 2018.21.1, © Adolph Rosenblatt Family 2 Michelangelo Lovelace, American, b.1960, *The Great Wall of Poverty*, 2002, acrylic on canvas, Museum purchase; Friends of Art Acquisition Fund, 2018.12, © Michelangelo Lovelace 3 Charles Rogers “Red” Grooms, American, b.1937, *Study for Strike Up The Band*, 1998, latex on foam core, Friends of Art Acquisition Fund, 2019.6, © Red Grooms, Member of Artists Rights Society (ARS) 4 Doris Lee, American, 1905-1983, *A Farm in Spring*, 1940s, oil on canvas, Friends of Art Acquisition Fund, 2018.25, © The Estate of Doris Lee

BEHIND THE SCENES

MEET THE CURATORIAL TEAM



Vanessa Sage



Andrew Wallace with artist Heidi Hernandez



Joshua Johnson

While visiting the Figge you may wonder how the exhibitions are organized, who installs the artwork and who writes the interpretative text. The Figge's curatorial team, Andrew Wallace, Vanessa Sage and Joshua Johnson are responsible for these things and more. Exhibitions require an intensive planning process that begins at least two years in advance. The process often includes collaborating with museums and artists, extensive research and designing the exhibition space. Maintaining an extensive

database and archives, corresponding with outside scholars, as well as tracking, moving and caring for the collection, are among the many other important curatorial activities that take place behind the scenes.

Andrew Wallace is the Figge's director of collections and exhibitions. Prior to joining the Figge in 2008, he worked at the Smithsonian's National Portrait Gallery in Washington, D.C., and the Center for Creative Photography in Tucson, Arizona. During his tenure at the museum,

he has worked to thoughtfully build the Figge's collection through his work with the Acquisitions and Loans Committee. Andrew leads the curatorial team and is responsible for the overall exhibition schedule as well as curating exhibitions including *Jefferson Pinder: Ghost Light* and the upcoming *Magnetic West* exhibition.

Vanessa Sage is the Figge's assistant curator. In addition to collections management and acting as a consulting staff member for the Acquisitions and Loans Committee, she has curated exhibitions including *John Bloom: Close to Home* and *Vik Muniz: Hand Remade*.

Joshua Johnson is the Figge's assistant registrar and preparator. In addition to installation, preparatory work and caring for the collection, he has curated exhibitions including *Kim Kever: Submerged in the Sublime* and *Mia Feuer: Totems of the Anthropocene*.

PROVIDING YOUR BEST VISION FOR LIFE

Regular Eye Exams
Eyelid Rejuvenation
Diabetic Eye Disease

Glaucoma
Cataracts
Macular Degeneration



Eye Surgeons Associates
Medical • Surgical • Optical
Providing Your Best Vision For Life

(309) 792-2020 | (563) 323-2020
www.esaeyecare.com



Art at Heart Finding Beauty



PREMIER SPONSOR



The Singh Group



SUPPORTING EVENT SPONSORS



CHRISTIE'S

CONTRIBUTING SPONSORS

BITCO Insurance Companies
Andy and Debi Butler
John and Nancy Danico of Xenotronics

Eirinberg Family
Thomas K. and Jennifer Figge
Delia and Dave Meier

Quad City Bank & Trust
US Bank
Wells Fargo
Mark and Barbara Zimmerman

PARTNER SPONSORS

Barry Anderson of Anderson, Lower, Whitlow, PC
Chocolate Manor
Global Partners Alliance LLC

I DO Events
Paragon Commercial Interiors
Susan Quail of Q₁₀ Enterprises
Cathy Weideman and John Gardner

SAVE THE DATE: 2020 GALA ON SATURDAY, JUNE 6

Photographs courtesy of Mark Hancock Photography



MEMBERSHIP AT THE FIGGE



The Figge Art Museum family saw tremendous growth this past year! With the excitement surrounding *French Moderns: Monet to Matisse, 1850-1950*, we added nearly 400 memberships during that period alone. The museum is serving approximately 1,700 memberships. This year we offered a new birthday program for our members that provided special offers to enjoy during the month of their birthday and convenient mobile membership cards.



As we continue to grow, we hope to expand offerings and benefits to our members. New this year, the museum is offering one member-only tour, program, event or class each month. Watch for these member-only events in the newsletter, eblasts and on the website. There has never been a better time to be a member!

Not a member? Join today by visiting www.figgeartmuseum.org, visiting the museum or calling 563.345.6638.



FIGGE TRAVEL

DUBUQUE

Last March an enthusiastic group of 40 Figge members and guests boarded a bus to explore Dubuque, Iowa. The first stop was St. Luke's United Methodist Church to view the fifth largest collection of Tiffany glass windows in the United States. It was a great comparison to the Figge's exhibition *Louis Comfort Tiffany: Treasures from the Driehaus* that was on display at that time. Following a beautiful tour of the church, the tour group had a chance to explore downtown Dubuque before ending the day at the Dubuque Museum of Art.



FRIENDS OF THE FIGGE

FIGGE'S CAJUN COOK-OFF



Sponsored by Rhythm City Casino, KWQC TV6, and the Quad-City Times

Held for the first time at the Rhythm City Casino, the Cajun Cook-Off welcomed more than 200 guests to sample delicious Cajun-inspired dishes from area chefs: Bayside Bistro, Biaggi's, Crow Valley Golf Club, Davenport Country Club, The Diner, Figge Café, Isle Casino Bettendorf, Johnny's Italian Steakhouse, Rhythm City Casino, Thunder Bay Grille, What BBQ & Bar, and Zeke's Island Café. It was another great year celebrating Fat Tuesday with the Figge!

A special thank you to participating chefs and restaurants.

RED, WHITE AND BOOM! FIREWORKS WATCH PARTY



Sponsored by Dean Christensen & Leslie and Brad Oates

More than 400 Figge members and friends gathered to celebrate Independence Day at the Figge Art Museum this year. That evening, the museum was full of people enjoying tours and family-activities, watching film shorts and shopping in the Museum Store. The evening ended, as always, with the customary Whitey's ice cream social and fireworks.

"THIS IS A FANTASTIC EVENT FOR MEMBERS OF THE FIGGE. KEEP UP THE GOOD WORK!"

—Anonymous

ART OFF THE WALL



Sponsored by Mills Chevrolet, Five Star Salon Spa, Dick Taber Estate Sales and K&K True Value Hardware

Art Off the Wall was held on Friday, August 23, with 170 attendees enjoying wine and hors d'oeuvres while bidding on more than 70 original pieces of donated artworks. The grand finale for the evening was a live auction of 11 artworks including Tiffany & Co. cuff links, a pastel landscape by Ellen Wagener, and a unique monoprint collage by Lloyd Schermer. Proceeds from this event support the museum's mission of *bringing art and people together*.

A special thank you to everyone who donated artworks for the auction.



EDUCATION

Educational initiatives enhance community experiences at the museum with on-site programs and out in the community through outreach experiences. With a focus on cultivating creativity, critical thinking, confidence and empathy, these initiatives go beyond the basic “learning about art” to teach life skills that are transferable. As the Figge’s educational programs continue to serve students of all ages, the museum’s educational spaces experienced significant success and growth last year. These spaces explore themes and activities that build community through multi-generational learning.

The Mary Waterman Gildehaus Community Gallery featured four exhibitions, including the annual Young Artists series from eight area school districts to the inaugural exhibition *Art by the Foot*. More than 400 local artists participated in *Art by the Foot*. The inventive and inspiring installation resembled a community mosaic.

Studio 1 displayed three exhibitions, including a special collaborative installation aptly titled *Synergetic Spaces*. With funding from a Quad City Arts’ Arts Dollars Grant, the Figge invited teaching artists Colleen Tomlinson and Heidi Hernandez from the Creative Arts Academy to guide their 6th-grade students through a transformation of the Studio 1 space, which emphasizes learning through creating. Pulling inspiration from Vanessa German’s *Miracles and Glory Abound*, Tomlinson and Hernandez’s students created an exhibition from idea generation through installation.

The Learn to Look Gallery complemented exhibitions throughout the year with installations that inspired viewers to pause, reflect and respond to the art around them. Pairing *Authors and Artists—Uniting Words and Pictures* and a special exhibition by Maurice Sendak; *The Color of Light* with the major exhibition featuring French Moderns; and *A Look at Stained Glass* with the Louis Comfort Tiffany exhibition, the gallery enabled viewers to reflect on Figge exhibitions in different ways.

The crowning achievement was the reinstallation of the beloved **Family Activity Center**. This space, which hundreds of families visit annually, received a complete makeover, with support from the Education Committee and sponsorship from the Roy J. Carver Charitable Trust, the Moline Foundation and Leanne Paetz. This yearlong

process included member and community surveys, significant feedback from teachers and parents, museum research and site visits, prototypes and lots of hard work from staff and volunteers. The space has a foundation built on the elements of art and principles of design that will serve museum guests of all ages as they learn through play for years to come.

EDUCATION PROGRAMS

Education Outreach served more than 23,000 community members last year. In addition, the Big Picture Program began a Visiting Artist mural project at the Scott County Juvenile Detention Center and monthly open-art sessions with community partners such as Humility Homes and Services. More than 7,000 children and families participated in five family days, as well as free summer programming, including the Art Cart, Big Picture in the House and a partner program with Ballet Quad Cities: Dance Me a Story.

An additional 6,000 students visited the museum as part of a study trip that included docent-guided tours, educational films and art-making experiences. Many of these students were able to visit the museum thanks to the Yellow School Bus Endowment. More than 5,000 students took part in Young Artists at the Figge recognition days, scout workshops and events such as the annual Girls on Fire conference.

Innovative programming for adults flourished in fiscal year 2019 with numerous art, music and language classes, nearly 45 Thursdays at the Figge programs and increased studio art-making experiences. Partner organizations provided creative experiences that showcased everything from dance and music to zoo animals. World-renowned artists, such as Vanessa German and Dr. David C. Driskell shared their talents with Figge audiences, and scholars contributed to the conversation. Countless experimental films, an originally composed piano solo and an African fashion show rounded out the year.

The popularity of monthly programs, such as Free Senior Day, Guided Mindfulness Meditation, and member trips both local and abroad, continued to grow, and the number of guided tour requests for adult groups nearly doubled.

ANNUAL FUND

WHAT DOES THE FIGGE MEAN TO YOU?

Dr. Walter Neiswanger donated 19 works of Haitian art to the museum in 1967, establishing one of the first collections of Haitian art in an American museum. At the time, Neiswanger stated that the museum represented “a pyramid of culture in a community, broadening people’s views of culture and other countries.”

We ask you: What is the Figge to you?

A fun gathering place? A place to decompress? Learn? Explore your hobbies? Enjoy lunch with a view?

The Figge’s mission of bringing art and people together is at the core of everything we do to ensure that we are meaningful to each of you.

In order to achieve our purpose, we need your assistance! The Figge’s impact has been possible through the generosity and support of people such as you. In order to continue our mission and magnify our impact, we ask you to consider supporting the Figge with a donation to the annual fund.

Supporting the annual fund influences all aspects of the museum—from education to acquisitions to family activities and more. Consider supporting the Figge with a one-time gift, a pledge or an estate gift. Visit www.figgeartmuseum.org or call 563.345.6638.



DESIGN FURNITURE PROJECT MANAGEMENT FLOORING INSTALLATION

PARAGON

COMMERCIALINTERIORSINC

210 Emerson Place • Davenport, Iowa 52801
563.326.1611 • www.paragoninteriors.com

Ruhl & Ruhl

REALTORS

Cell: 563.370.8990

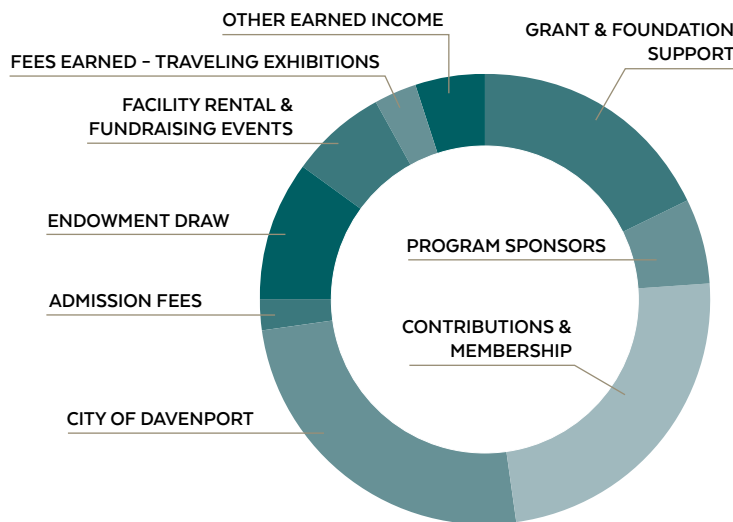
Stan Goodyear, CFP, CPA
REALTOR®, Licensed in
Iowa & Illinois, SRES®

4545 Welcome Way
Davenport, IA 52806
StanGoodyear@RuhlHomes.com
www.StanleyGoodyear.RuhlHomes.com

FINANCIALS

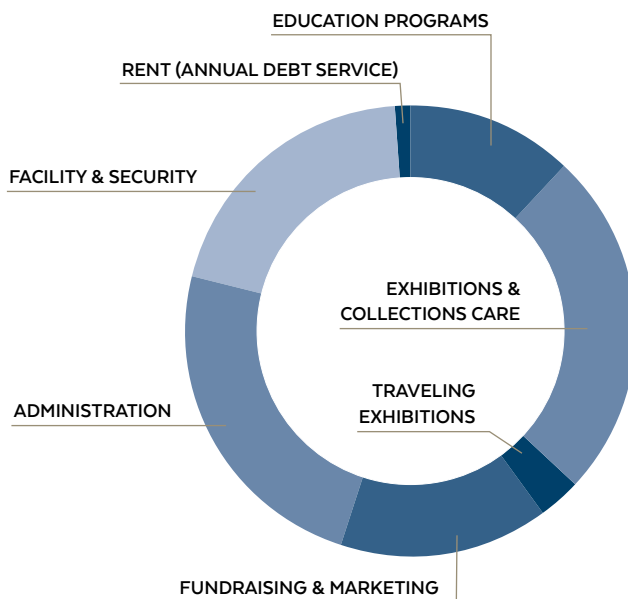
The Figge finished the 2019 fiscal year with a positive operating result. Operating revenue exceeded operating expenses by \$219,664, exclusive of depreciation. Both contribution income and income earned through museum activities (i.e., admissions, Museum Store revenue and memberships) benefited from the strength of the exhibitions offered, especially *French Moderns*. Additionally, the generous contribution made by Quad City Bank & Trust for naming rights to the Figge Grand Lobby space had a significant impact.

Residual construction debt on the building amounted to \$883,418 on June 30, 2019. As a result of the successful efforts of the Figge Board of Trustees to secure funding to eliminate all remaining construction debt, the Figge has secured the remainder of the \$2 million of matching funds needed to meet the Bechtel Trust's \$1 million challenge grant. Based on the payout schedule of these funds, all remaining debt will be eliminated by mid-2020.



REVENUE

Grant & Foundation Support	\$ 540,513
Program Sponsors	195,922
Contributions & Membership	740,191
City of Davenport - Collection Care	753,000
Admission Fees	63,097
Endowment Draw (operations)	305,211
Facility Rental & Fundraising Events	215,457
Fees Earned - Traveling Exhibitions	78,000
Other Earned Income	159,605
Total Revenue	\$ 3,050,996



EXPENSE

Education Programs	\$ 341,533
Exhibitions & Collections Care	707,892
Traveling Exhibitions	78,000
Fundraising & Marketing	434,738
Administration	671,805
Facility & Security	572,364
<i>Less University of Iowa cost sharing</i>	
Rent (annual debt service)	25,000
Total Expenses	\$ 2,831,332

*Total Revenues and Expenses (unaudited)
Note: Debt is carried on the books of a separate but related organization and amounted to \$883,418 at June 30, 2019.*

MUSEUM GIVING

VISIONARY

\$25,000 +

Bill and Christine Gallin
In memory of Martin and
Susan Katz
John Deere Classic –
Birdies for Charity
Susan Perry and
Stanley Goodyear
Peggy Pierce
William Prichard
Susan Quail

PHILANTHROPIST

\$10,000 +

John H. Anderson
John and Nancy Danico
Don A. and Connie Decker
Perry and Elise Hansen
Beaux Arts Fund Committee
Kay Kretschmar Runge
Wynne and David Schafer
Lloyd and Betty Schermer
C.R. and Nancy von Maur
William and Marie Wise
Family Foundation

AMBASSADOR

\$5,000 +

Samuel and Marsha Allen
Cynthia Carlson
Martha Easter-Wells
The Eirinberg Family
Frances Emerson and
Robert McClurg
Patricia Figge
John Gardner and
Catherine Weideman
Hunt and Diane Harris
Peg and David Iglehart
IH Mississippi Valley Credit Union
Richard Kleine and Jane Rouse
Brian J. and Elizabeth Lemek
Brian and Diana Lovett
Delia and Dave Meier
Katie and Dan Molyneux
Charitable Giving Fund
Alan and Julie Renken
Wynne and David Schafer
Tony and Joyce Singh
Thomas O. and Margaret Nobis
Foundation Fund
Jon and Michelle Tunberg
Susan and Richard Vermeer
Ann Werner

PATRON

\$2,500 +

Bill & Melinda Gates Foundation
Rick Bowers and Ahn Spence
Thomas J. Brawley

John and Nancy Danico
Don Doucette and
Lynn Drazinski
Ralph Gibson and Mary Junck
Max and Jacki Guinn
Marie-Catherine and
Pierre Guyot
Bernhard and Vera Haas
John and Kay Hall
Mrs. Alan M. Hallene
Janice Hartwig
E.R. Hofmann
Caroline Kimple
Ross and Judie Lance
Mary Lind and Tom Lytton
Richard and Barbara Lynn
Nancy Polis
Quad City Bank & Trust Co.
Stanley and Betty Reeg
Jim and Michelle Russell
Greg and Mary Schermer
Mark and Deborah Schwiebert
Hugh and Debby Stafford
Rusty and Doris Unterzuber
US Bank
James and Melissa von Maur
Will Wolf and
Laura Murphy-Wolf
Xenotronics Company

ARTIST

\$1,250 +

Anonymous
Bank of America
Charitable Foundation
William Barnes
Peter and Kim Benson
Don and Dee Bruemmer
Andy and April Buske
Dean Christensen
Ralph and Marcia Congdon
Seth and Adrian Crawford
Brock and Carol Earnhardt
Sara and Nathan Fierce
Major General Yves and
Kathy Fontaine
Bonnie Fox
Denise Garrett and
Jim Niedelman
Marie-Catherine and
Pierre Guyot
Robert and Susan Hartung
James Havercamp
Debbie Hegwein
P. Charles Horan
Valerie Horvat and
Patrick Comparin
John and Patty Johannesen
George and Charlotte
Koenigsaecker

Ann Koski
Jane and Kevin Koski
Mary Lou Kotecki
Kenneth Koupal and
Thomas Kersting
Robert Kustom and
Dolores Payette Kustom
Yvonne Krysztofiak
William and Kathy Langley
Mark and Marie Latta
Robert and Sherry Lindsay
Clayton and Jan Lloyd
Mary Lujack
Robert and Janet McCabe
Frank and Ann McCarthy
Larry and Carol Minard
Jill Moon and Richard Seehuus
Mumford Family Foundation
Steven and Leeann Ollenburg
John Parkhurst
Dolores Payette Kustom
Douglas and Debra Roberts
Royal Neighbors of America
Siv Brit Saetre and
James Entwistle
Linda Schneider
Larry and Marilyn Schreiber
Rick and Nancy Seidler
Steve Sinner
Sam Skorepa and Abbey Furlong
John and Diane Slover, Jr.
Jim and Linda Tank
Tom and Brooke Terronez
Leanne Tyler
Paul and Donna VanDuyne
Wolfe Family Foundation
Mark and Barbara Zimmerman

STEWARD

\$500 +

AAA - The Auto Club Group
Barry Anderson
Gerald and Patricia Barenthin
Joyce Bawden and
Richard Karwath
Mark and Rita Bawden
Leslie and Sara Bell
Eileen Benson
Robert and Suzanne Benson
Fred and Shirley Berger
Mike and Barb Bleedorn
William and Ruth Bloom
Ellen Boeye
Steven Burke and
Darcy Anderson
William and Dixie Burress
Ed and Molly Carroll
Cynthia Cavanagh and
Michael Fitzgerald
Harry and Linda Cockrell
George and Nancy Coin
Kent and Nancy Cornish
Thomas Coryn
John and Jody DeDoncker
Mara and Michael Downing
Carol and Clark Ehlers
Robert and Karlen Fellows
Dawn Fensterbusch
Michael J. and Jenny Figge
Stephen Figge
Joel and Diane Franken
Joel Franken and Jessica Taylor
Manfred and Sandy Fritz
Peter Gierke
Amrit and Amy Gill
John and Maureen Golinvaux
William and Marvel Green
Philip and Greta Habak
Carolyn Hamilton
Beth and Mark Hancock
Jan Harper
Thomas Harper
William and Ruth Anne Hartman
Nancy and John Hayes
Connie Heckert
John C. Higgins
John Hobbs and Davia Gallup
Steve and Mary Ellen Hunter
Johnson Watkins Family
Foundation
Marjorie Kinsler
John and Jane Klinkner
Ann Koski
Richard and Judith Kreiter
Todd and Mary Beth Kunau
Marty Kurtz
Barbara Leidenfrost
Joe and Ann Lohmuller
Donald and Janet Luethje
Curtis Lundy
Alan Marin
Marilyn and Mark Marmorine
Sylvia Martin
Ron and Cindy May
Frank and Ann McCarthy
Gary and Jean Medd
Glenn and Kathleen Medhus
Marion Meginnis and
Jack Haberman
Sharon Michaelsen
Harry and Georgia Mihm
Roger and Kathleen Miller
Roger and Sarah Mohr
Molyneux Insurance
Kimberly and Tim Montgomery
Dave and Charlotte Morrison
Bernadette Murphy
Dougal and Pam Nelson
Henry and Linda Neuman
Lois Nichols

Ann and Paul Nicknish
Vickie Palmer
Priscilla Parkhurst
Leo and Renate Peck
Jeff and Jana Peterson
Mel Piff and Sara Holtz
Dan Portes and Judy Shawver
Steven and Bonna Powell
Anne Powers
Stephen and Scott Pullen
Lynn Quinn NonEndowed
Donor Advised Fund
Jeanie Quinn
Paul and Janet Rafferty
Rock Island Art Guild
Dan and Marysue Salmon
Tim Schiffer
Aleeza Singh and Kyle Ekberg
Amanda and Matt Slavens
Dan and Gayna Stadelman
Amy and Fritz Swearingen
John Thorson and
Zaiga Minka Thorson
Senator Maggie Tinsman
Eric and Barb Trimble
Larry and Jane Tschappat
Twin State, Inc.
Douglas and Jean Vickstrom
Hal and Vaishali Wagher
Patricia Walkup
Dana and Faye Waterman
Tom and Maria Waterman
David and Marlyne Weiner
Don and Lanora Welzenbach
Wessels Charitable Endowment
Donavon K. Weston and
Kathleen Christensen-Weston
Gary and Becky Whitaker
Dana and Mark Wilkinson
Mark and Laura Wriedt
Lance Young
Dale and Marie Ziegler

INVESTOR

\$250 +

Anonymous
Carol and Jack Albrecht
Mary Joy Allaert-Feeney
Mary Jane Andrews
Andy and Elizabeth Axel
Bart and Denise Baker
Tara Barney
Robert and Priscilla Bass
Michael Batz and
Margaret Morse
J. Michael and Barbara Bauswell
Mike Baderstadt and
Georgia Jecklin
Brandon and Allison Behrens
William and Judy Benevento

Joseph Bergstrom and Shawna Duske	Gene Hellige and Loren Shaw Hellige	Jacqueline O'Donnell Jeanne and Paul Olsen	Cal and Jill Werner Neil and Perrine West	William and Kathryn Carter Charles and Susan Cartwright
Prakash and Rupa Bontu, M.D.	Dale Hendricks and Alison McCrary	George and Patricia Olson Glenn Peterson	Randy and Barbara Westerdale Pamela White	Joseph and Shelley Chambers Jennifer and Tim Chen
John and Lin Boone	Marjorie Hier	Shirley Pfeifer	Todd and Heidi Woeber	Jane Chiappinelli and Jeff Miller
James and Marcia Borel	John Hobbs and Davia Gallup	Decker and Jayne Ploehn	William and Patricia Wohlford	Taft and Marie Christian
Jerry and Carrie Bowman	Ann Hochhausen and Marlin Whitmer	Karla Polaschek	Steve and Barbara Wright	Pat and Roger Clawson
Thomas and Elaine Bridge	James and Carol Horstmann	David and Paula Pratt	Karin Youngberg	Richard Clewell
Peter and Lisa Britt	Ralph and Mary Ellen Horton	Alta Price	BENEFACTOR \$150 +	Teresa and Steve Coder
George and Mary Britton	Frederick and Virginia Houlton	Theodore Priester and Emilie Giguere	Anonymous	David Cohen
Patrick J. and Sue Broderick	Harry Hoyt, Jr.	Professional Touch Cleaning Services	Steve and Anne H. Adler	Anne Colville and Steve Morrison
Sarah and Tom Budan	Michael and Hedy Hustedde	Kristin Quinn and Anthony Catalano	Wanda Agens	Steve Morrison
Greg and Christine Bush	Steve and Maggie Jackson	Stephanie and Tom Raphael-Nakos	Christine Agy	Sarah and Ethan Connors
Peter G. Caras	Lois Jecklin	Jerome and Carole Reid	Naurin Ahmad M.D.	Gene and Mollie Conrad
James and Lisa Carstens	Judy and Jerry Johansen	Republic Companies	Kenton Allen and Ghada Hamdan-Allen	Mary Lou Coon
Nancy Chapman	J. Paul and Joyce Johnston	James and Jacque Richards	Patricia Andersen	Mike and Jane Coryn
David and Sharon Cinotto	Jerry and Alice Jones	Ian and Sara Russell	Steve Anderson and Kathy Emorey	Phillip and Barbara Cray
Chris and Connie Connolly	Suhas and Sapna Kalghatgi	Carol Schaefer	Marla and Steve Andich	John and Ann Cross
Diana Cook	Ann and Jim Kappeler	Anthony and Helen Schiltz	Eric and Denise Andresen	Maria Cummings
Jim Countryman and Laura Hopkins	Joe and Ana Kehoe	Samuel and Nancy Schold	Mary Jane Andrews	Lynn and Zach Daczyk
Marty Curry	Aaron and Dorole King	Herb and Heidi Schultz	Sheila Avalos	K. Vinje and Suzanne Dahl
Joseph D'Souza	Frank and Teresa Klipsch	Ivan and Chris Sederstrom	Paul and Kimberly Baresel	Mary Daniels
Michele and H.J. Dane	Kent and Cheryl Kolwey	Josie Seymour and Jason Cochuyt	Stephanie Barrick and Geoffrey Campbell	Carmen and Jack Darland
Barbara Davison	Barbara Korbek	Nick and Gail Shammas	Honey and Daniel Bedell	Donna Darnall
Richard Dienesch and Jane Cassidy	Harold and Rosanne Krubsack	Susan Sharar and Leo Schubert	Karen Beetham and Palmer Steward	John and Carolyn Deason
Patricia Duffy	Gary and Gerda Lane	James F. and Elizabeth Shearouse	John and Lynn Behrends	Don and Nancy Dehner
Leslie Dupree and Ben Beydler	Barbara Langley	William Shore and Catherine Martinez	Thomas Bengtson and Kevin Carney	Jason and Sonia Deutmeyer
Doug and Lynne Dvorak	Brian and Ella Layer	Malavika and Devendra Shrikhande	John and Patti Berge	Alan and Dawn Dickey
Aric and Tina Eckhardt	Dan and Ruth Lee	Ron and Becky Sipes	David and Ewelina Bergert	Patty Dooley-Jones and Maggie Jones
Elizabeth and Keith Ehrecke	Roberto Leone and Andrew Hamilton	Jerry and Julie Skalak	Judy Bhatti and Kevin Smith	Sheila Dreher
Loryann Eis	Bill and Suzanne Liegois	Sandra Miller Sohr	Joyce Bishop	Mary and Michael Drymiller
Jane Emeis	Robert and Barbara Lipnick	Tom Spitzfaden and Robin Smith	George and Cynthia Bleich	Maxine Duhm
Rebecca Emeis Brookhart	Catherine and William Litwinow	Todd and Sharon Staples	Bob and Julie Blew	Chris Dunn and Elizabeth Russell
Kenneth and Barbara Emerson	Helen Macalister	David and Sherry Staub	Harlow and Lila Blum	J. Huston Dunn and Joanne Mercer
Sandra Eskin	Marjorie Magers	Donald Staub	Ingrid Bogdanowicz	John Dunsheath and Ann Hailey
Ted and Lisa Ewing	Barbara Manlove	Thomas and Mary Ann Stoffel	Amy Bower	Elizabeth and Keith Ehrecke
Thomas C. Taylor and Thomas M. Fiedler	Marlene Marolf	William and Carmen Stout	Norm and Linda Bower	Laura Ekizian
Christopher Gabany	Brad and Lillian Martell	Marge Stratton	Dave and Ali Boyler	Michael Ellis and Thea Holmon-Ellis
Robert and Susan Gallagher	Joseph and Carolyn Martin	Joan and Jim Sweeney	Deborah and Thomas Bracke	Mary Ann Engel
Susan and David Gallagher	Tim and Karen Maves	Laura Swift	Dr. and Mrs. Alex Brandtner	Mark and Barbara Erickson
Martha Gaulrapp	Michael and Joan McCarthy	The Singh Group at Merrill Lynch	Karolyn Britt	Ann Ericson-Nolan
Steven and Joni Geifman	Paul and Sue McDevitt	Clara Delle Thompson	Elizabeth Brooke and Bob Lank	Jeff and Anne Ferguson
David and Rene Gellerman	Tom and Anne McVey	Thoms Family Foundation	Karen Brooke	Rob and Dale Fick
Genesis Systems	Craig Meincke	Scott and Beth Tinsman, Jr.	Daniel and Dorothea Buck	Luann Field
Mike and Sue Gerdes	John Menninger	Gwen Tombergs and Dave Wayne	Stan and Martha Buel	Sheila and Robert Fitts
Melinda and Greg Gowey	Craig and Linda Miller	Nikhil and Archana Wagle	Richard and Jo Burns	Matt and Karen Fitzsimmons
Shawna Graham	Linda Minich and Denise King	James Walters	Pleshette Butler	Helen and Blaine Flack
Shaun and Victoria Graves	Bonnie and Gerald Moeller	Mike and Gail Walton	Brian and Barbara Cady	Patrick and Jeanne Flynn
Catherine Halligan	Christopher and Leanna Moen	Patrick Walton and Theresa Jantzi	Alan Campbell	Ronald and Beverly Foley
Barb Hansen	Ann and Jerry Mohr		Shelia and Alvaro Campos	Becky Forth and Dana Rosenberg
Linda and Gerald Hardin	Barbara and Tom Montgomery		Nicole and Lee Carkner	Susan and Robert Foster
Carol and Mark Harpole	Nancy Mott		Charlene Carmack	Carol Francis and David Gamble
LeeVon Harris	Emily and Robert Navarre			Kevin and Wendy Freibern
Jim and Rose Ann Hass	Martha Neal			Ron and Cynthia Freidhof - Ross' Restaurant
Jeff and Barbara Havenner	David Mark Nelson and Ann Marie Campagna			David and Connie Freund
Kirk and Luann Haydon	Robert and Marilyn Noe			
Daniel and Judy Hazelton	Jim and Judy Nordquist			

MUSEUM GIVING

Thomas and Abby Freymann
James and Darcy Friske
Jay and Sharon Gellerman
Laura Genis
Benjamin Gladkin and
Haley Bierman-Holloway
Earl Gloeckner
James and Stephanie Godke
Robert and Mary Jo Godwin
Rhonda Golden
Regina and Jeffrey Goldstein
Tom and JoAnn Goodall
Sue and Dale Goodmundson
Velma and James Graham
Mary Grant
Ann Green
Mimi Greer
Luanne and Tom Gritton
Rex and Susan Grove
Barbara and James Hahn
Benjamin Hahn
Roger and Laurie Hakeman
Jay and Jennifer Hamilton
Brenda and James Hanerhoff
Nidal and Sana Harb
Daniel and Amber Hardin
Tina Harper
Alison Hart and Karl Rhomburg
Cathleen and Patrick Hart
Paul and Paula Hartmann
Nancy and William Hass
Sandra Hass
Marcie Hauck
Bob Heimer and
Victoria Navarro
Mark and Tammy Hermanson
Heidi and Kris Hernandez
Kelly Hickles
Vern and Ann Hill
Jim and Linda Hoepner
Tim and Teresa Hoil
Bill Homrighausen
Peg and Scott Hopkins
John and Raisin Horn
Stacey and Terry Houk
Michael and Louise Howcroft
Dave and Chris Howland
Randall and Danette Hunt
Robert and Hallie Hunt
Wendy and Steven Hunt
Mary Kay and James Hymes
Raphael Iaccarino and
Barbara Maness
Gary and Nancy Ingelson
Brian and Devon Irby
William and Deborah Irely
Thomas Jackson and
Joanne Stevens
Chris and Dave Jagger
Laura Jagger

Brian Jennings
Josh and Lara Jepsen
Jewish Federation of the
Quad Cities
Anne Johnson
Mr. and Mrs. Michael Johnson
Janki and Deepak Joshi
Chris and Michelle Juehring
Sherry Kaufman
William and Lee Kessinger
Barbara Kiddoo
Scott Killip and Shellie Darr
Lee and Julie Kimball
Nancy Kime and Fred Mulch
David Kinkaid and
Mary Tarnish-Kinkaid
Brian and Tracy Kinman
Peter and Susan Kivisto
Joel Kline and
Catherine Woodman
Donna Knickrehm
Michael and Lenore Knock
Wolf and Linnea Koch
Georgie Koenig and Lloyd Kilmer
Rhadika Kolla and Faraz Manazir
George and Anne Kovacs
Kevin and Susan Kraft
Stephen and Mindy Kruse
Lawrence and Rebecca Kummer
Janet Kunau
Joan and Vito Kuraitis
Norma Kurth
Charles and Donna Kuykendall
Melanie Landa and
Mike Moulton
Dave and Cathie Lange
Jennifer and Jim Lanphere
Jack Laud and Jodi Haxmeier
James and Elisabeth Leach
Janet Leman
Carolyn Levine
Edward and Michelle Lillis
Ruth Long and Dean Challis
Holly Loussaert
Jerry Lowe and
Janet Brown-Lowe
Tod and Diane Luppen
Stephen and Bobette Maginas
Beth Ann Magnuson
Daniel Malachuk and
Catherine Reinhardt
Robert and Mona Martin
Jeff and Jo Ellen Maurus
Deni McCarter and
Michael Johnson
Cheryl and Waylyn McCulloh
William and Peggy McCullough
Maureen McGreevey
Donna McKay
Thomas and Sharon McLaughlin

Susan McPeters
Teresa and James Mesich
Kenneth and Kathleen Meyer
Italo and JoAnn Milani
Phyllis and Jerry Miller
V. Miller Consulting
Rose and Bob Mohr
Stephen and Melissa Mohr
Norman and Janet Moline
John and Linda Molyneaux
Daryl Ann Moore
Kathy and Dan Moore
Jeannie and Matt Moran
Sara and Keith Morby
Edwin and Chris Motto
Gregory and Susan Murphy
Kathleen Negaard
Anne Ney
Amy and Tom Nicknish
Gary and Nancy Nolan
Robert and Patricia Nolan
Don and Angela Normoyle
Northwest Chiropratic Centre
Darlene Norton
Samuel and Elisabeth Norwood
Rosemary Noth
Frank and Roxanne Nowinski
Devin Oake
Brad and Les Oates
James and Pamela Ohnemus
Arla Olson
Angela and Dale Owen
Bruce and Polly Owens
Peter Paisley
Janet Parker
Heidi Parkhurst and
Steve McCann
Pranav and Sima Patel
Don and Marsha Pedersen
Dick Petrizzo and Pam Feather
Mary Phares
James J. and Kathy S. Phelan
John and Lisa Philibert
Joyce Piechowski
Carol Plouffe
Jeffrey Porter
Joseph Pozzi
Srinivasan and Gowri Purighalla
Megan Quinn
Debra Rantilla
Kelly and Katherine Rea
Janice and Jerry Reese
John and Mariann Reese
Paul and Marcia Renaud
Connie Retherford
Joyce Reynolds
Debra Rigney-Hays
Paul and Karen Rohlf
Mark and Rita Sauer
Dennis and Patricia Rose

John and Celeste Roth
Sue and Vic Rothbardt
Byron and Alice Rovine
Bill and Karen Rubright
RutabagaA, the Heart of
Regional Art
David and Ginny Samuelson
Jack and Peggy Sands
Ronald Schaecher
Carol Schaefer
Martha and Timothy Schermer
Jane Schiltz
Kendall and Susan Schwartz
Jim Schwarz and Linda Gonzales
David and Julie Scott
Judith Ann Seefeldt
Randi and Gary Segal
Donna Seifert
Sue Shawver
Donald and Patricia Sierk
David and Dale Smith
Steve and Patti Sorensen
Larry and Mary Southwick
Tom and Holly Sparkman
Dick and Helen Stahl
George Staley
Don and Rita Stanforth
Scott Stange
Jackie and Gene Staron
David and Sinead Steele
Juliet and Mark Stock
Douglas Stoker and Nancy Allen
George and Doris Straetker
Eugene and Susan Sullivan
Gala Sunderbruch
Sharon Suss and Bill Smutz
Linda Sutherland and
Michael Mumford
Michael Swartz and
Nancy McConnell
Jennifer Swofford and
Gordon Adams
Charles and Valerie Swynerberg
Jim and Stephanie Tansey
Arthur and Corinne Tate
Duane Thompson and
David Lasky
Martin Tinberg and
Carol Branagan
John and Linda Titus
Mandi Toutsch
Clayton and Sue Traver
John and Kathleen Tritt
Charles and Joyce Urbain
Norman and
Margaret Vandekamp
Deb VanSpeybroeck, Ph.D.
Emily Vanwaardhuizen
Susan Vering
Diane von Dresky

Susan von Maur
Judy Wade
Gary and Kathryn Wagner
Margaret Walsh
Joann Wandrey
Sibyl Waterman
Marvin and Carol Webb
Ida and Jim Weibel
Christopher and Kim Welch
Matthew Welty
Liz and Ted Whisler
Jeff and Megan Whitaker
Natalie and Chad White
Todd and Judy White
Fred and Cathie Whiteside
Jolene Whittemore
Karen Wickwire, Ph.D.
and Spike Bloom
Bettie and Jeff Wigand
Linda Wilkinson
Tony and Mary Williams
Tom and Kathy Wine
Greg and Karyn Witte
Joe and Angela Woodhouse
Rock and Susanne Woodstock
Kathleen and Lee Woodward
Patrick and Dawn Woodward
Lisa and Jim Wooldridge
Joel and Michelle Wright
Jeffrey and Donna Young
Derk and Mishelle Ziegler

GRANTS AND SPONSORS

\$100,000 +
Bechtel Trusts & Foundation
Quad City Cultural & Educational
Charitable Trust
Regional Development Authority
Scott County Regional Authority

\$50,000 +
Hubbell-Waterman Foundation

\$25,000 +
Arconic Foundation
Brand-Boeshaar
Foundation Fund

\$10,000 +
Bank of America -
Museums on Us
Iowa Department of
Cultural Affairs
ORA Orthopedics
Chris and Mary Rayburn
The Singh Group at
Merrill Lynch
Twin Shores
US Bank Foundation

\$5,000 +

Genesis Health System
IH Mississippi Valley
Credit Union
Barbara Leidenfrost
Moline Foundation
Quad City Arts
Rock Island Art Guild
Terrostar/Medix Dental
US Bank
Wells Fargo Bank
Cal and Jill Werner
Zimmerman Honda

\$2,500 +

John and Nancy Danico
of Xenotronics
GLH Galleries
John Gardner and
Catherine Weideman
Grant W Brissman &
Virginia M Brissman
Foundation
Hunt and Diane Harris
Marc and Gma Howze
J. Randolph and Linda Lewis
Lujack Luxury Motors
MidAmerican Energy
Company Foundation
Mills Chevrolet
Paragon Commercial Interiors
Raelene and Scott Pullen
Quad Cities Community
Foundation
Quad City International Airport
Susan Quail
Wynne and David Schafer
TBK Bank

1,000 +

Anderson, Lower, Whitlow, P.C.
Audiology Consultants
BITCO Insurance Companies
Andrew and Debi Butler
CBI Bank & Trust
Dean Christensen
Doris and Victor Day Foundation
The Eirinberg Family
Global Partners Alliance LLC.
GreenState Credit Union
Carolyn Levine
Delia and Dave Meier
Susan Perry and
Stanley Goodyear
Quad City Bank & Trust Co.
River Center Adler Theatre
Rock Island Community
Foundation
Studio 483
Tom and Brooke Terronez

Theisen's Home, Farm,
Auto Store
Visit Quad Cities
Xenotronics Company
Mark and Barbara Zimmerman

500 +

Five Star Salon and Spa
Dick Taber Estate Sales
Eye Surgeons Associates, PC
Friendship Manor
Jim and Rose Ann Hass
Nancy and William Hass
K&K True Value Hardware
Jacqueline O'Donnell
Brad and Les Oates
John J Quail Foundation
Mark and Deborah Schwiebert
Andrew and Elizabeth Wallace

IN-KIND

Five Cities Brewing Company
Five Star Salon and Spa
AAA – The Auto Club Group
Kathryn and Lawrence Allen
Anonymous
Amir and Lisa Arbisser
Artworks
Steve Banks
Bettendorf Office Products &
Evergreen Art Works
Davenport Country Club
Biaggi's Ristorante Italiano
Calla
Carousel of Delights, LLC
Chocolate Manor
Dean Christensen
Christie's
Crawford Brew Works
Crow Valley Country Club
Daffodil Row
K. Vinje and Suzanne Dahl
Dairy Queen – Bettendorf
DQ Nail Bar
Dean and Jane Dubin
Dwellings
Exotic Thai
Faithful Pilot Cafe
Flowers by Staacks
Rose Frantzen and Chuck Morris
Frontier Hospitality Group
Fuji Sushi & Grill
John Gardner and
Catherine Weideman
John and Chrissy Halligan
Hunt and Diane Harris
Shirley Harris
Gene Hellige and
Loren Shaw Hellige
Hola America

Hot Glass Inc.
Stacey and Terry Houk
I DO Events
Isle Casino Hotel
Jimmy's Pancake House
Johnny's Italian Steakhouse
K&K True Value Hardware
Martin and Susan Katz Estate
Joe and Ana Kehoe
Marjorie Kinsler
Cindy and Dan Kuhn
KWQC TV6
J. Randolph and Linda Lewis
Lexus of Quad Cities
LULAC
Robert and Janet McCabe
Frank and Ann McCarthy
Joe Meirhaeghe
Michael's Arts & Crafts Store
Dennis and Pat Miller Estate
Bernadette Murphy
Martha Neal
Henry and Linda Neuman
George and Patricia Olson
On the Avenue Salon
Paragon Commercial Interiors
James and Sandra Partridge
Peggy Pierce
Per Mar Security Services
Beth Peters and Jason Carpenter
Anne Powers
Quad-City Times
Susan Quail
Jackie and Mel Rambo
Lorie and Terry Rathje
Red Lantern
Rhythm City Casino, Davenport
Randy Richmond and
Audrey Brown
Wynne and David Schafer
Lloyd and Betty Schermer
Tim Schiffer
Mark Schwiebert
Rick and Nancy Seidler
Shirley Wilde Trust
Tory Folliard Gallery
Steve Sinner
David and Dale Smith
Solutions Management Group
Hugh and Debby Stafford
Dick Taber and Brad Mumm
Tantra Asian Bistro
Teske Pet and Garden
The Diner
The Vault Beauty Lounge
& Urban Retreat
The Current Iowa
Thunder Bay
John and Linda Titus
TPC Deere Run

Susan and Richard Vermeer
Tom and Susan Vieth
Ellen Wagener
Wagner Cleaners
WaterMark Corners,
a Trimble Pointe Company
Lisa Wendel
West Music
What BBQ & Bar
Todd and Judy White
Whitey's Ice Cream
Todd and Heidi Woeber
Mark and Laura Wriedt
Yuriko Yamaguchi
Zeke's Island Cafe
Walt and Bobbi Zifkin

IN HONOR

**Marriage of Aleeza Singh
and Kyle Ekberg**
David and Rene Gellerman

La Table Ronde

Robert and Janet McCabe

MEMORIALS

Robin Andrews

John and Kay Hall
Judith Wesenberg
R. Richard Bittner
Fred and Shirley Berger
Glen E. and Sarah Gierke, Jr.
Jim and Judy Hilgenberg
Pamela Johnson
Kurt And Laura Nisi
Jim Owen
Scott and Raelene Pullen
Darcey Rubens
Carol Schaefer
Tim Schiffer
Nancy and Phil Tabor
Tom and Judy Tiemeier
Diana Van Deusen
C.R. and Nancy von Maur
Mark Whitte
Bill and Helen Wundram

Gloria Gierke

Nancy and Michael J. Biele
Don and Dee Bruemmer
Jennifer and Tim Chen
Kathleen Dunphy
John Gardner and
Catherine Weideman
Stuart and Nancy Goldsmith
Mimi Greer
John and Kay Hall
Dean and Judith Ann Hiles
Jim and Judy Hilgenberg
Kenneth Koupal
J. Randolph and Linda Lewis

Holly Loussaert
Monique McDonald
Mike and Jean McGee
James and Mallory Mezvinsky
Kimberly B. and
Tim J. Montgomery
Otto Nobis
Jane Paul
Susan Quail
Jennifer Reyes
Kay Runge
June Schindler
Tim Schiffer
Steve Sinner
Mike and Mary Fran Stopulos
Maggie Tinsman
Casey Timmons
C.R. and Nancy von Maur
Dana and Faye Waterman

Jerry Hansen

Robert and Margaret Andriano
Mike and Barb Bleedorn
Patrick J. and Sue Broderick
Janet Ciegler
Leslie Dupree and Ben Beydler
Linda and Warren Fierce
Bonnie Fox
Pat and Tom Freiburger
Craig And Karen Hansen
Connie Heckert
Lynn and Gary Hirsch
Raymond and Joyce Holland
Delores Immesoete
Connie Jones
Kevin and Jane Koski
R B and K S Kramer
Richard and Judith Kreiter
Ross and Judie Lance
J. Randolph and Linda Lewis
Sandra Macumber
Sylvia Martin
Lori And Kerry Mildon
Eloise Pfeiff
Susan Quail
Stephanie and
Tom Raphael-Nakos
Ardith and Phillip Simms
Craig and Nancy Van Hook
Patricia Walkup

John K. Figge

Patricia Figge

Judy McNamara

Hugh and Debby Stafford

Laraine Shellenberger

Patrick J. and Sue Broderick

Tom Magers

Sandra and Robert Cahoy
Clark and Carol Ehlers

MUSEUM GIVING

Glen E. and Sarah Gierke, Jr.
John C. Higgins
Scott Holgorsen
J. Randolph and Linda Lewis
Tim Schiffer

Jean Mayes

J. Randolph and Linda Lewis

Carolyn Moon

John and Kay Hall

Jean Priestler

Anonymus
Anonymus
Jane Acker
Mary Jane Andrews
Fred and Shirley Berger
Nancy and Michael J. Biele
Patrick J. and Sue Broderick
Don and Dee Bruemmer
Joseph and Shelley Chambers
Mike and Mary Beth Chupka
Eugene and Mary Collins
Susan Davidson
Mike Duffy
Robert and Janice Egger
Clark and Carol Ehlers
Jean and Dick Ellsworth
Mary Ellen Evans
Bonnie Fox
John Gardner and
Catherine Weideman
Dale Haake and
M.C. Lucas-Murillo
Mrs. Alan M. Hallene
John and Kay Hall
Catherine Halligan
Julie and Paul Hansen
Jan Harper
Jim and Rose Ann Hass
Bob Heimer and
Victoria Navarro
John C. Higgins

Shirley Holgorsen
Paul and Beatrice Jacobson
Mark and Kathy Kilmer
Marj Kimmel
Ross and Judie Lance
Mark and Marie Latta
J. Randolph and Linda Lewis
James and Gene Lischer
Robert and Barbara Lipnick
Cyndra Losasso
Mary Lujack
Curtis Lundy
Helen Macalister
Katherine Macnider
Caryl Maurer
Robert and Janet McCabe
Suzanne McCabe
Kim Mitchell
Roger and Sarah Mohr
Bernadette Murphy
Bradley Mussmann and
Melissa Kakert-Musmann
Lois Nichols
Otto Nobis
Jan Olt
Larry Pithan
Anne Powers
Susan Quail
Megan Quinn
Stephanie and
Tom Raphael-Nakos
Bill and Sylvia Roba
Kay Runge
Tim Schiffer
Ardy Schnittjer
Sally A. Sullivan
Janelle Swanberg and
Donald J. Fish
Dick Taber and Brad Mumm
C.R. and Nancy von Maur
Sibyl Waterman
Ann Werner

Harold Rayburn

Don and Dee Bruemmer
Cindy Carlson
Mary Ellen and Amy Chamberlin
Jennifer and Tim Chen
Deborah Crooks
Carmen and Jack Darland
Todd and Angie Duren
Laura Ekizian
Keith and Elizabeth Ehrecke
Thomas and Dori Erps
Glen E. and Sarah Gierke, Jr.
Melinda and Greg Gowey
Rod Heckman
Gail and Ralph Heninger
John Hobbs and Davia Gallup
William and Deborah Irely
Norma Kurth
Craig and Laura Levien
J. Randolph and Linda Lewis
Joel and Ann Lorentzen
Thomas Martineau
Bill and Linda Nichelson
William Nichelson
Wendy and Terry Peterson
Scott and Raelene Pullen
Kay Runge
Carol Schaefer
Tim Schiffer
JoAnn Smyson
William and Patricia Wohlford

Anne Sinner
Bob and Rose Anderson
Mary Jane Andrews
Gay Behrensmeyer
Fred and Shirley Berger
Mike and Barb Bleedorn
Floyd and Paulette Bruns
Parvin and Ahmad Chamany
Greg and Kat Ellyson
Joel and Diane Franken
Ila Gober

Shaun and Victoria Graves
Jeremy and Sarah Gripp
Jacob and Evelyn Hook
Art and Jan Jackson
Barbara Korbek
Van and Janet Korell
Kevin and Jane Koski
Dr. Mary Lou Kotecki
Barbara Leifker and
Byron Bohnen
J. Randolph and Linda Lewis
Alphonse Meirhaeghe
Robert and Sharon Meyer
M.P. Ricketts
G.C. and Sherry Rousey
Kay Runge
Mary Ellen and Fernando Salinas
Daniel and Debra Schladt
David and Theresa Schwartz
Tim Schiffer
Jerry and Carol Sergeant
Ron Simmering
Mikel and Wendy Van Dyke
Gene and Arlene Vincent
John and Sherri Voelliger
David and Susan Warner

Karen Sommers

Billie Brewer

Sue Staley

Tim Schiffer

Ardell Staub

Larry and Marilyn Schreiber

Jeanne Stopulos

Dave and Linda Emrick

Richard von Maur

John and Kay Hall
Linnsey Leithner
Robert and Susan Moran
Tim Schiffer
Jenny W. Sutton
Dick Taber and Brad Mumm

INSTITUTIONAL MEMBERS

Augustana College
Black Hawk College
Creative Arts Academy
Eastern Iowa
Community College
Palmer College of Chiropractic
St. Ambrose University
University of Iowa
Western Illinois University

CHECK US OUT! LIBRARY MEMBERS

Bellevue Public Library
Bettendorf Public Library
Carnegie-Stout Public Library
Cordova District Library
Davenport Public Library
East Moline Public Library
Edwards River Public Library
Geneseo Public Library
LeClaire Community Library
Maquoketa Public Library
Moline Public Library
Monticello Public Library
River Valley District Library
Robert R Jones Public Library
Rock Island Public Library
Scott County Library System
Sherrard Public Library
Warren County Public
Library District
Waverly Public Library
Western District Library
Winterset Public Library

A proud sponsor of
Figge programs

MERRILL 
A BANK OF AMERICA COMPANY
The Singh Group



Communication is Essential for Everyday Living!

 **Audiology Consultants, P.C.**

Call today to begin your journey to better hearing!

www.audiologyconsultants.com

600 Valley View Drive
Lower Level
Moline, IL
(309) 517-3889

2215 E. 52nd Street
Suite 2
Davenport, IA
(563) 355-7712

3426 N. Port Drive
Suite 500
Muscatine, IA
(563) 264-9406

Hammond-Henry Hospital
600 N. College Avenue
Geneseo, IL
(309) 944-9181

MUSEUM STORE

The Museum Store offers an assortment of curated gifts that focus on art and the Figge collections and exhibitions.

NEW! Light Chiffon Scarf and Portrait of Maquoketa Banner Bag

Beautiful color-drenched, light chiffon scarf featuring the panels of the Maquoketa, Iowa, landscape by Rose Frantzen. \$35

Portrait of Maquoketa Banner Bag
Featuring artisan hand-dyed and sewn leather handles. \$50



NEW! Horse Inspired Gifts

Inspired by one of the Figge's favorite sculptures, *Half Moon*, by Deborah Butterfield.

Various "Anna Viktoria" modern Swedish horse items range in price from \$7 to \$58.

Figge Museum Store cards range in price and occasion from \$1.75-\$5.

NEW! Wooden Gift Ideas

There is no shortage of gift ideas in wood, including the Grant Wood—Exclusive Wooden Puzzle with whimsy pieces for \$26. Also enjoy beautifully carved wood bowls and containers.

The Museum Store also carries art-themed books and farm-inspired merchandise available at prices that fit any budget.



Museum Store Hours

MONDAY Closed | TUESDAY-WEDNESDAY 10 a.m.-5 p.m.
THURSDAY 10 a.m.-9 p.m. | FRIDAY-SATURDAY 10 a.m.-5 p.m.
SUNDAY Noon-5 p.m.

STORE INFORMATION 563.345.6649

UPCOMING EVENTS

Museum Store Sunday

Sunday, December 1

We will host a Shopping Trolley for Museum Store Sunday! Guests can ride the trolley to three destinations—the Figge, the German American Heritage Center, and the Quad City Arts Festival of Trees shop—all on Second Street in Davenport. You can give gifts with purpose—to share the specialty products that our one-of-a-kind stores provide.



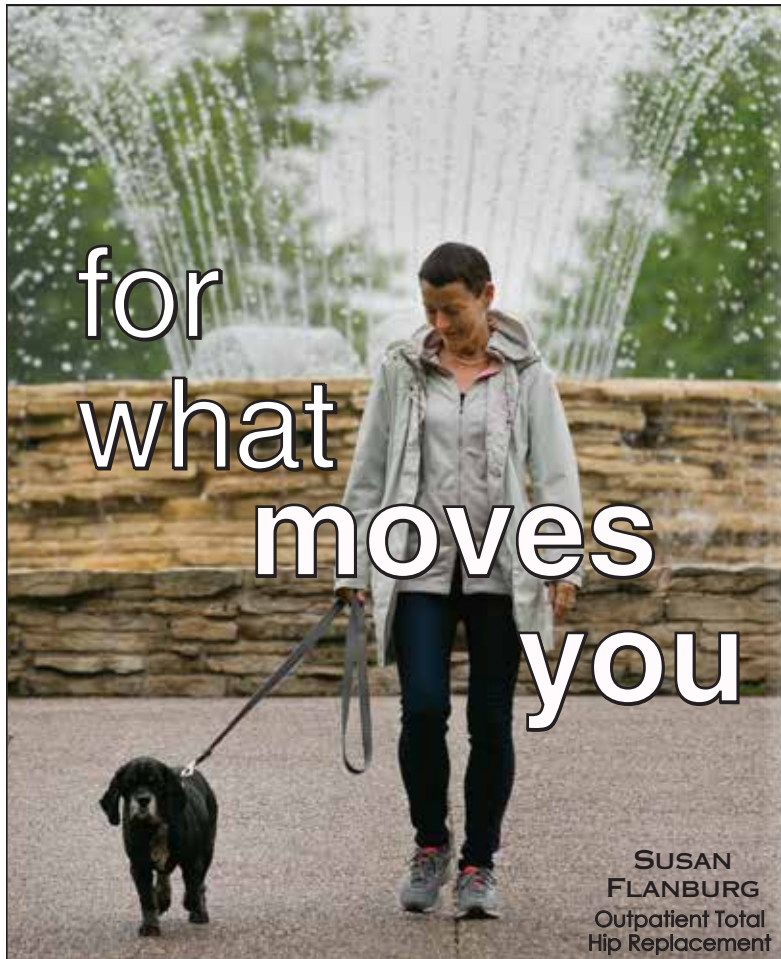
Holiday Shopping and Book Signing Night

6-9 p.m. Thursday
December 19

Stop by the Museum Store for holiday shopping! Enjoy the snowflake wonders of artist Keith Bonnstetter.

Book signings by:

Rose Frantzen
Portrait of Maquoketa
Chuck Morris
The Storytelling Tree



for
what
moves
you

SUSAN
FLANBURG
Outpatient Total
Hip Replacement

HOME IN A DAY

OUTPATIENT TOTAL JOINT REPLACEMENT

The surgeons at ORA Orthopedics specialize in outpatient total joint replacement surgery. As the largest and most advanced provider of orthopedic care in the Quad Cities, our fellowship-trained, board-certified physicians are redefining the experience for patients who need total joint replacement.

With new advances in surgical techniques and personalized care focused exclusively on you, you can now walk out of the surgical center the very same day and recover in the comfort of your own home. Learn more at qcora.com.

